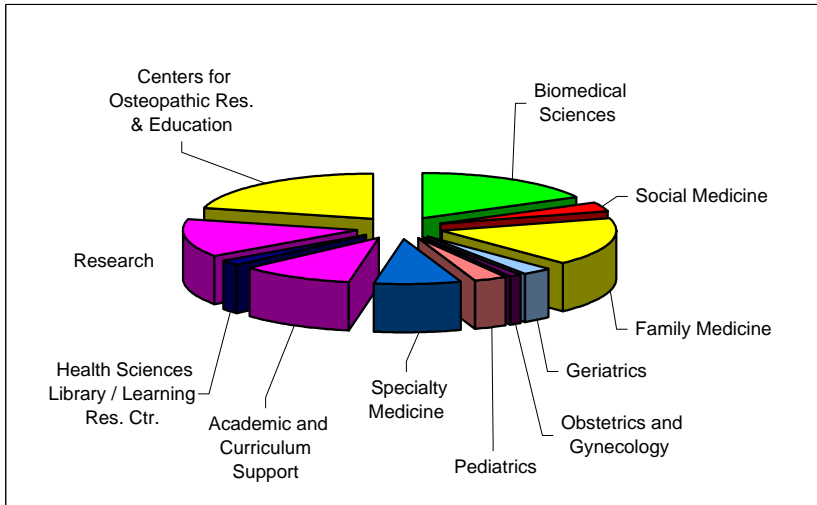


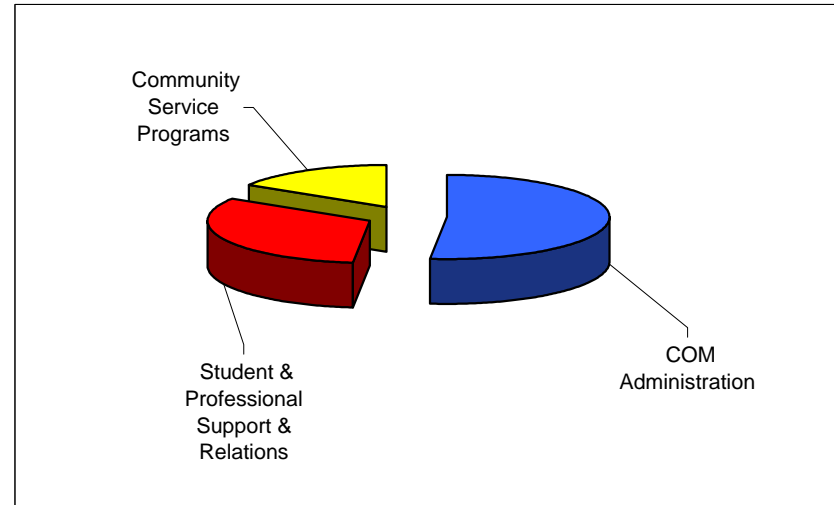
OHIO UNIVERSITY  
**COLLEGE OF OSTEOPATHIC MEDICINE**  
**BUDGETED EXPENDITURE DETAIL**  
**FISCAL YEAR 2005-2006**  
(IN THOUSANDS)

**Academic Programs**



Unit	Value	% of Total
Biomedical Sciences	4,027	17.34%
Social Medicine	778	3.35%
Family Medicine	3,990	17.18%
Geriatrics	651	2.80%
Obstetrics and Gynecology	255	1.10%
Pediatrics	707	3.04%
Specialty Medicine	1,840	7.92%
Academic and Curriculum Support	2,439	10.50%
Health Sciences Library / Learning Res. Ctr.	499	2.15%
Research	3,125	13.45%
Centers for Osteopathic Res. & Education	4,915	21.16%
<b>Total</b>	<b>\$ 23,226</b>	<b>100.00%</b>

**Administration and Support Services**



Unit	Value	% of Total
COM Administration	3,818	51.58%
Student & Professional Support & Relations	2,397	32.38%
Community Service Programs	1,187	16.04%
<b>Total</b>	<b>\$ 7,402</b>	<b>100.00%</b>